

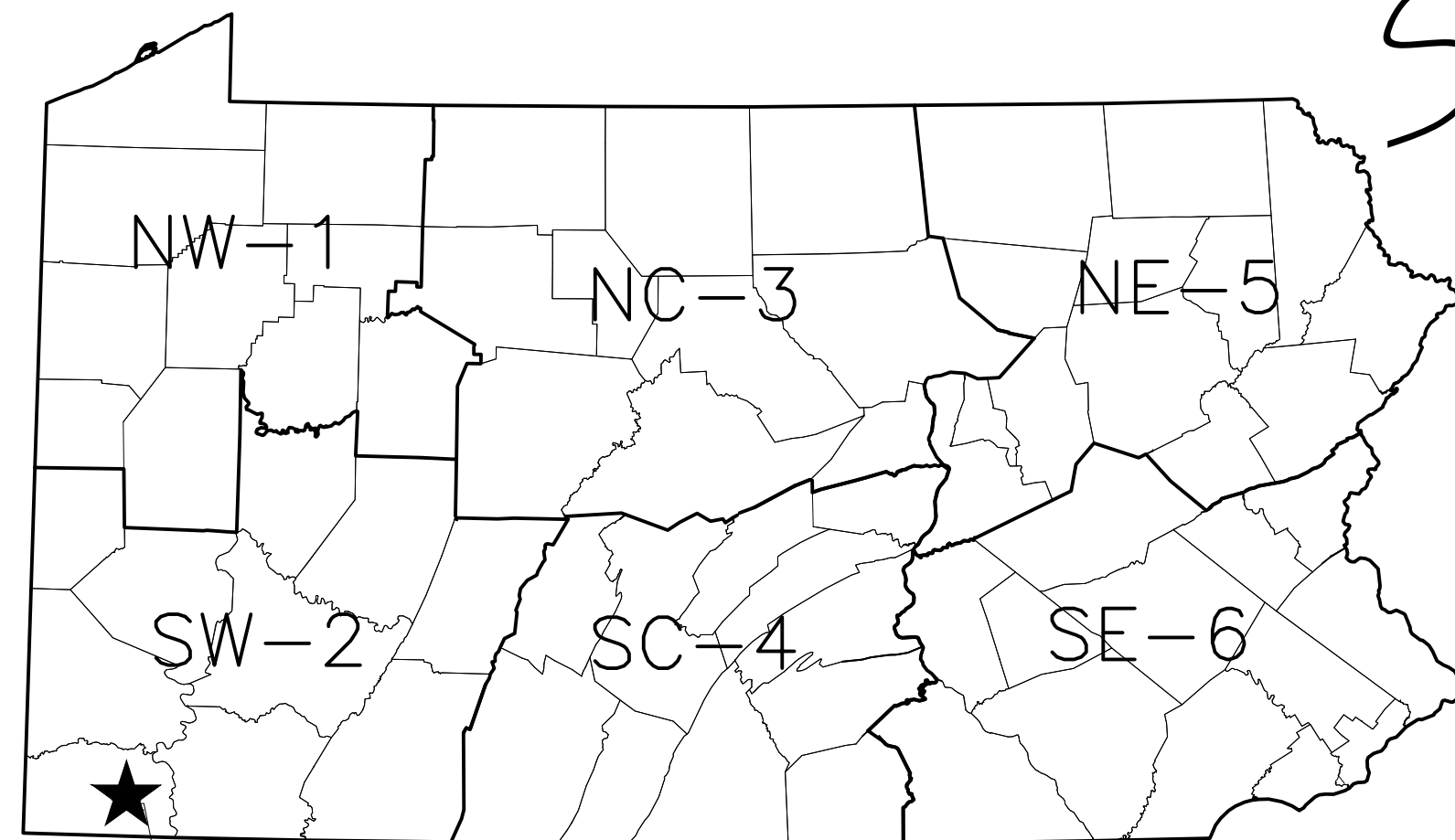
PENNSYLVANIA GAME COMMISSION

SGL NO. 179

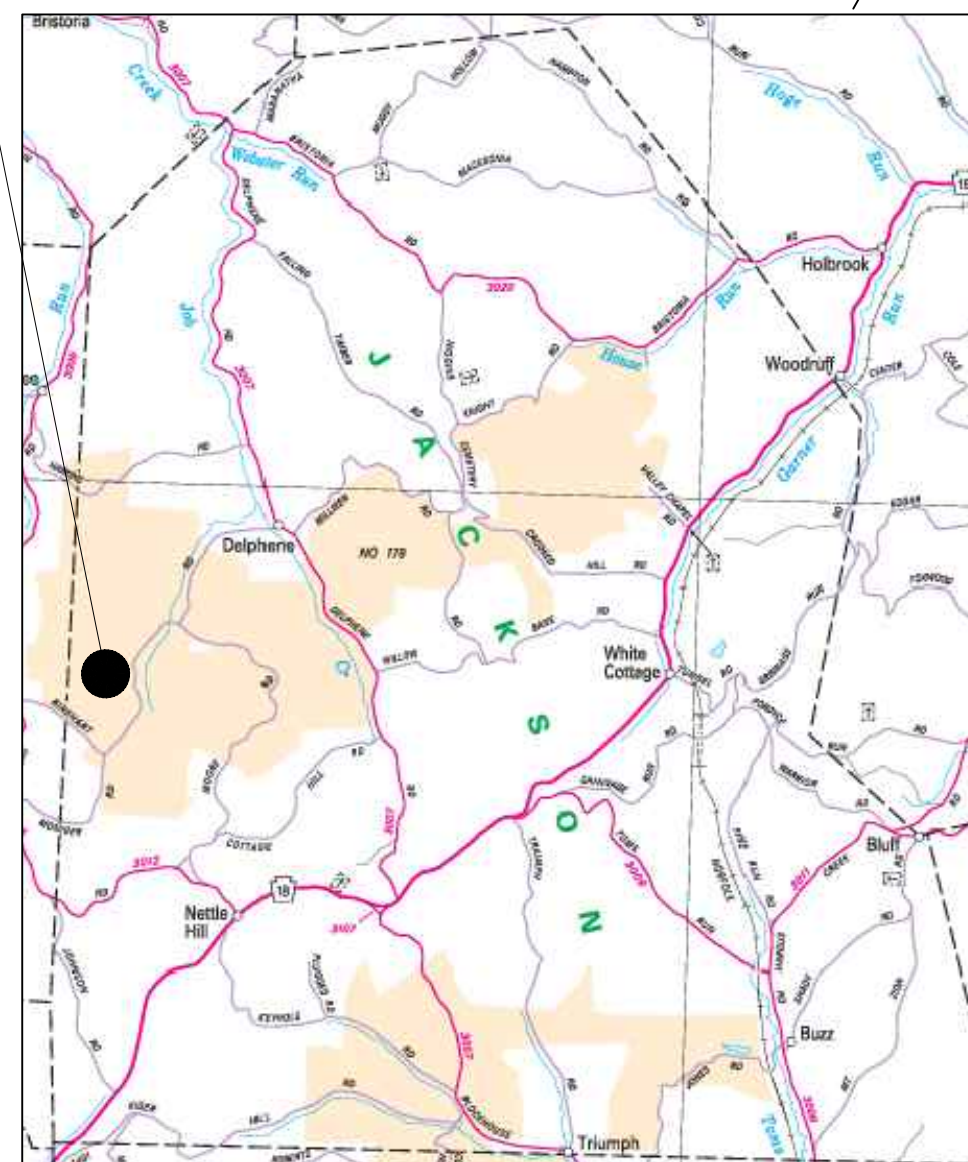
SHOOTING RANGE IMPROVEMENTS

JACKSON TOWNSHIP, GREENE COUNTY

APRIL 2023



★ = GEO N39.818687° / -80.396788°W



SITE LOCATION
NO SCALE

GENERAL NOTES:

1. THIS PROJECT IS LOCATED ON STATE GAME LAND (SGL) #179 IN JACKSON TOWNSHIP, GREENE COUNTY. THE SITE IS LOCATED APPROXIMATELY 4.0 MILES NORTHWEST OF S.R. 18 AT NEW FREEPORT PA. THE SITE AND ADJACENT PROPERTY IS OWNED BY THE PA GAME COMMISSION (PGC).
2. WORK HOURS SHALL BE DURING NORMAL PGC BUSINESS HOURS MONDAY-FRIDAY, 7:45 AM TO 4:00 PM EST. DIFFERENT WORK HOURS MUST HAVE PRIOR WRITTEN APPROVAL BY THE PGC. REQUESTS FOR DIFFERENT HOURS MUST BE SUBMITTED AT LEAST TWO (2) BUSINESS DAYS IN ADVANCE.
3. THE EXISTING STABILIZED ACCESS DRIVE AND ADJOINING PARKING LOTS OFF OF SAMPSON ROAD IS TO SERVE AS ACCESS AND STAGING AREAS FOR THE PROJECT.
4. THE SHOOTING RANGE WILL BE CLOSED DURING CONSTRUCTION ACTIVITIES. THE CONTRACTOR SHALL FURNISH AND INSTALL ANY NEEDED SIGNS, BARRICADES, WARNING TAPES, ETC. TO PROTECT AND PROHIBIT ACCESS TO THE PROJECT AREA DURING CONSTRUCTION. THE PGC SHALL POST "RANGE CLOSED" SIGNS ALONG THE ACCESS DRIVE LEADING TO THE SITE ALONG SAMPSON ROAD.
5. THE CONTRACTOR SHALL REMOVE EXISTING PGC SIGNAGE PRIOR TO CONSTRUCTION AND WILL REINSTALL THE SIGNS AFTER WORK IS COMPLETE.
6. NUMBERS ON THE AERIAL MAP REFER TO CONSTRUCTION NOTES ON SHEET 2.
7. SHELTERS SHOULD BE ALIGNED CORRESPONDING TO THE TARGETS DOWN RANGE. PGC STAFF WILL FINALIZE LAYOUT OF SHELTERS AND SPACING PRIOR TO PROCEEDING WITH FURTHER CONSTRUCTION.
8. REMOVE AND PROPERLY DISPOSE OF ALL CONSTRUCTION DEBRIS.
9. RESTORE ANY DISTURBED VEGETATED AREAS WITH 4" OF TOP SOIL, SEED AND MULCH



PHOTOGRAPH OF DRAINAGE CONCERNS
NO SCALE



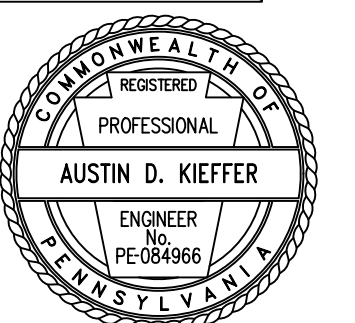
PHOTOGRAPH OF RIFLE RANGE FLOOR
NO SCALE



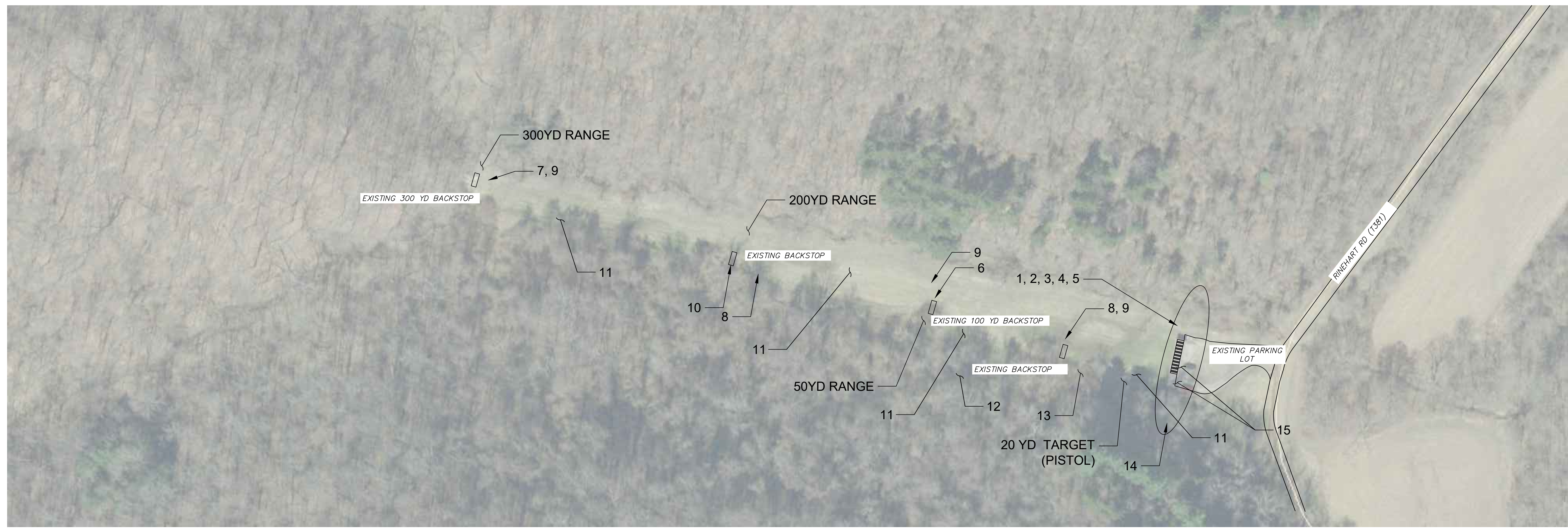
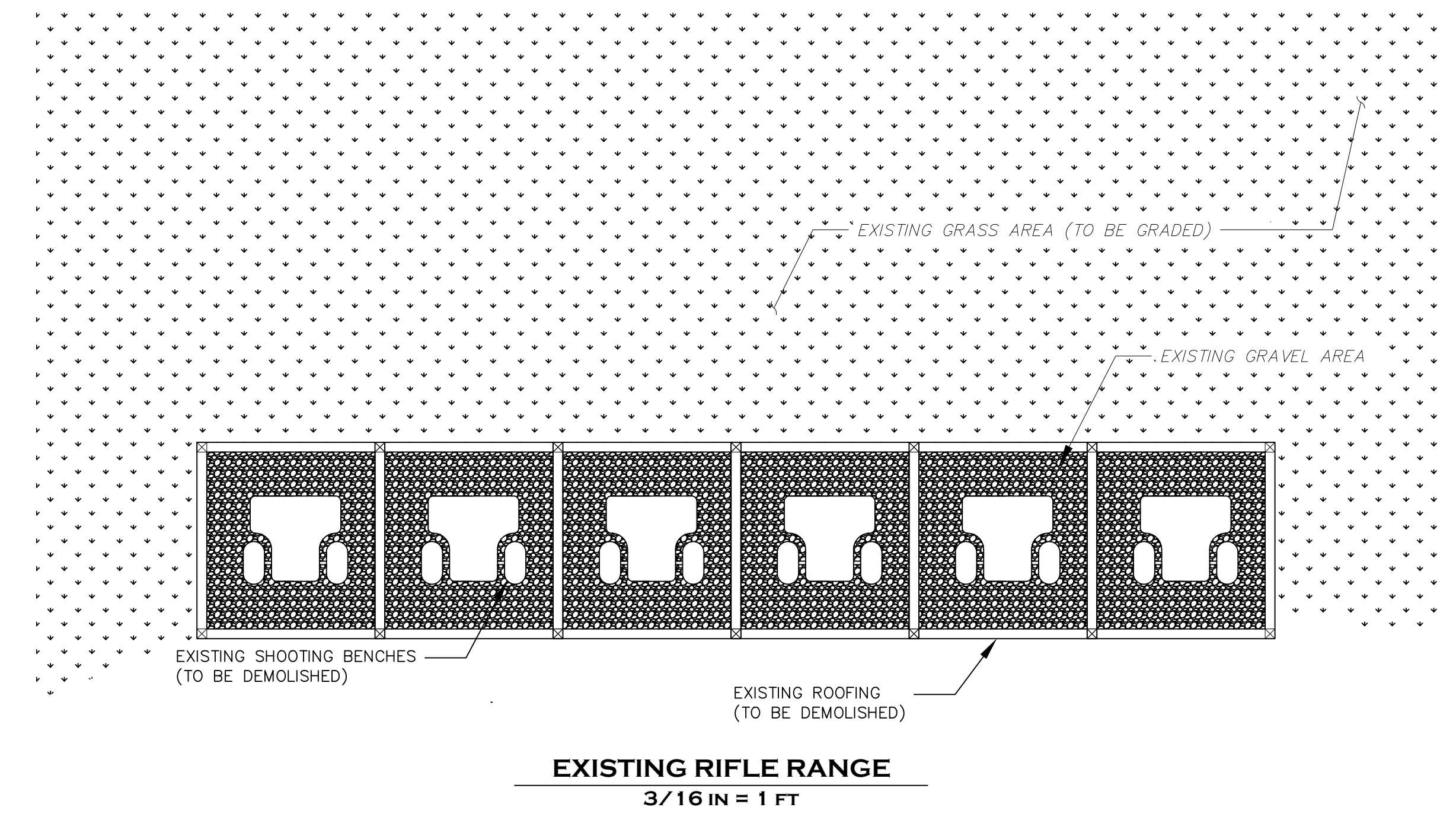
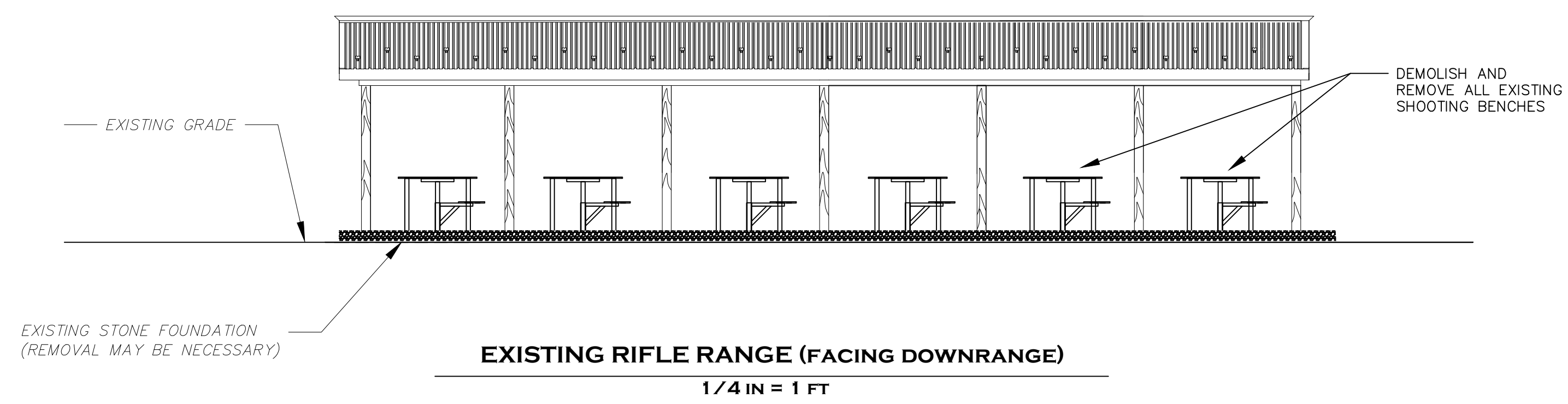
PHOTOGRAPH OF RIFLE RANGE BENCHES
NO SCALE



PHOTOGRAPH OF EXISTING TARGET HOLDERS
NO SCALE

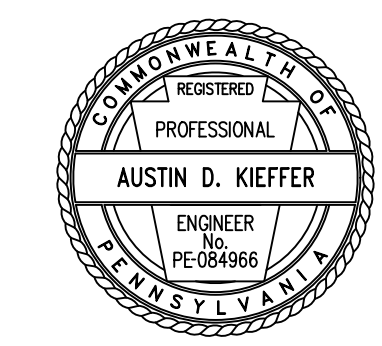


PENNSYLVANIA GAME COMMISSION		
STATE GAME LANDS #179	JACKSON TWP	GREENE CO.
SHOOTING RANGE IMPROVEMENTS		
COVER PAGE		
REVISIONS	PROJECT NO.	PGC-179-22-1
▲	DRAWN BY:	ACL
▲	DATE:	4/03/2023
▲	SHEET NO.	1 OF 5

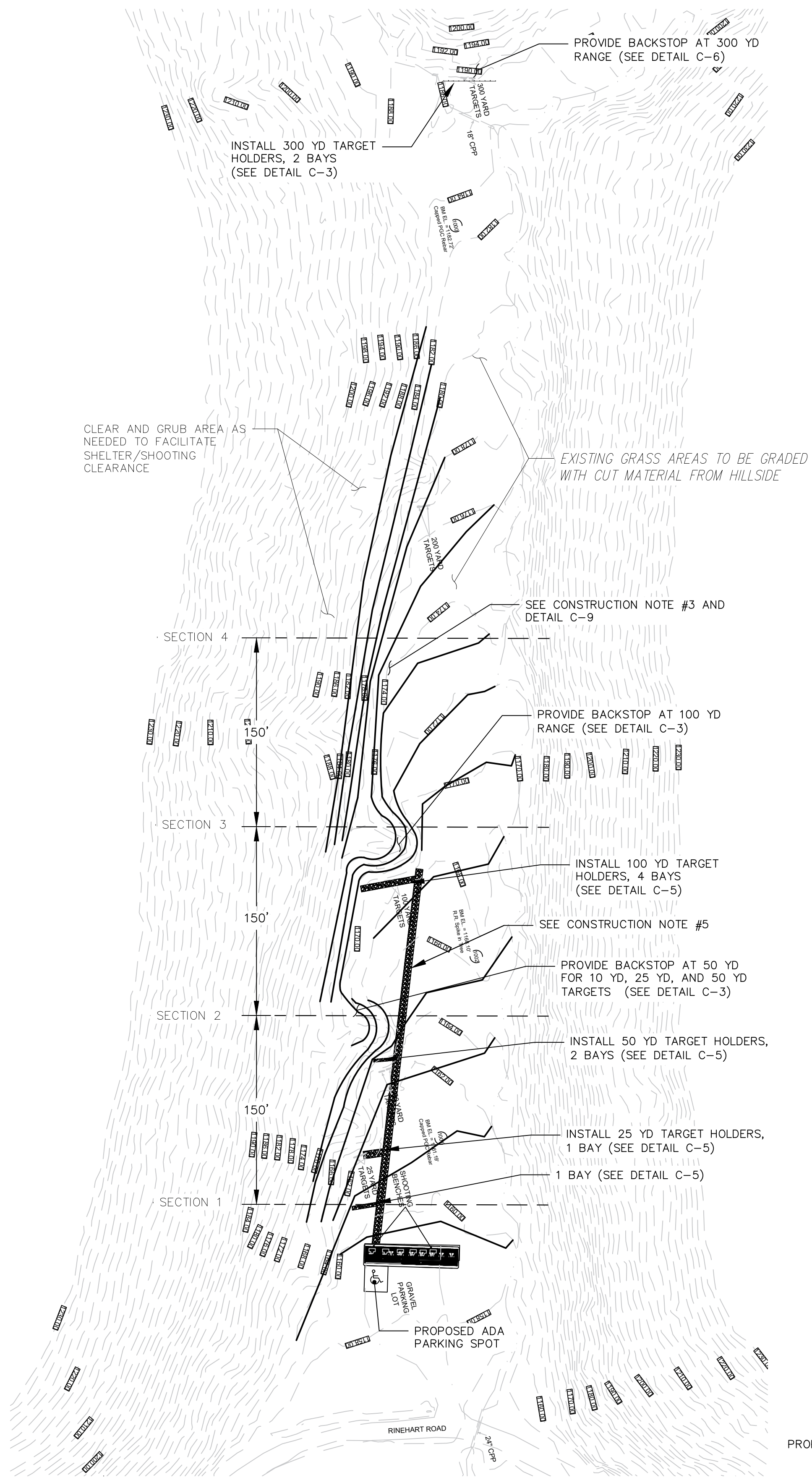


SHOOTING RANGE IMPROVEMENT CONSTRUCTION TASKS:

- RIFLE RANGE:**
1. DEMOLISH EXISTING SHOOTING BENCHES.
 2. PROVIDE ONE SHOOTING RANGE SHELTER.
 3. PROVIDE CONCRETE PAD BELOW SHELTER.
 4. PROVIDE 2A COARSE AGGREGATE AS SUBBASE UNDER PAD, ALONG PROPOSED PAD AND ACCESS DRIVE (SEE DRAWINGS FOR DETAILS AND LOCATIONS).
 5. INSTALL (7) SHOOTING BENCHES (PGC SUPPLIED, CONTRACTOR TO INSTALL).
 6. INSTALL BACKSTOP FOR (1) BAYS AT 50.
 7. INSTALL BACKSTOP FOR (2) BAYS AT 300 YARDS.
 8. REMOVE BACKSTOP AT 100 YARDS.
 9. DEMOLISH EXISTING TARGET HOLDERS AND PROVIDE NEW TARGET HOLDERS.
 10. PROVIDE AASHTO #10 ON BACKSTOPS.
 11. PROVIDE 2A COARSE AGGREGATE AND AASHTO #10 WALKWAY; EXTEND TO 100 YD TARGET.
 12. CLEAR AND GRUB SOUTHWEST SIDE OF RANGE FLOOR BERM TO EXPAND RANGE & PROVIDE LINE OF SIGHT (VOLUME- VARIOUS UNDERGROWTH AND TREES 6"-12" STUMP DIAMETER).
 13. CLEARED VEGETATION IS TO REMAIN ON SITE FOR DISPOSAL; ON SITE LOCATION TO BE DETERMINED BY PGC PERSONNEL.
 14. PROVIDE AASHTO #10 WALKWAY FOR PISTOL BAYS AND PROVIDE ADDITIONAL AASHTO ON BACKSTOPS.
 15. INSTALL (2) PISTOL SHELVES.
 16. THREE (3) BAYS TO BE DESIGNATED FOR 25 YARD TARGET (2 PISTOL SHELVES AND 1 SHOOTING BENCH).

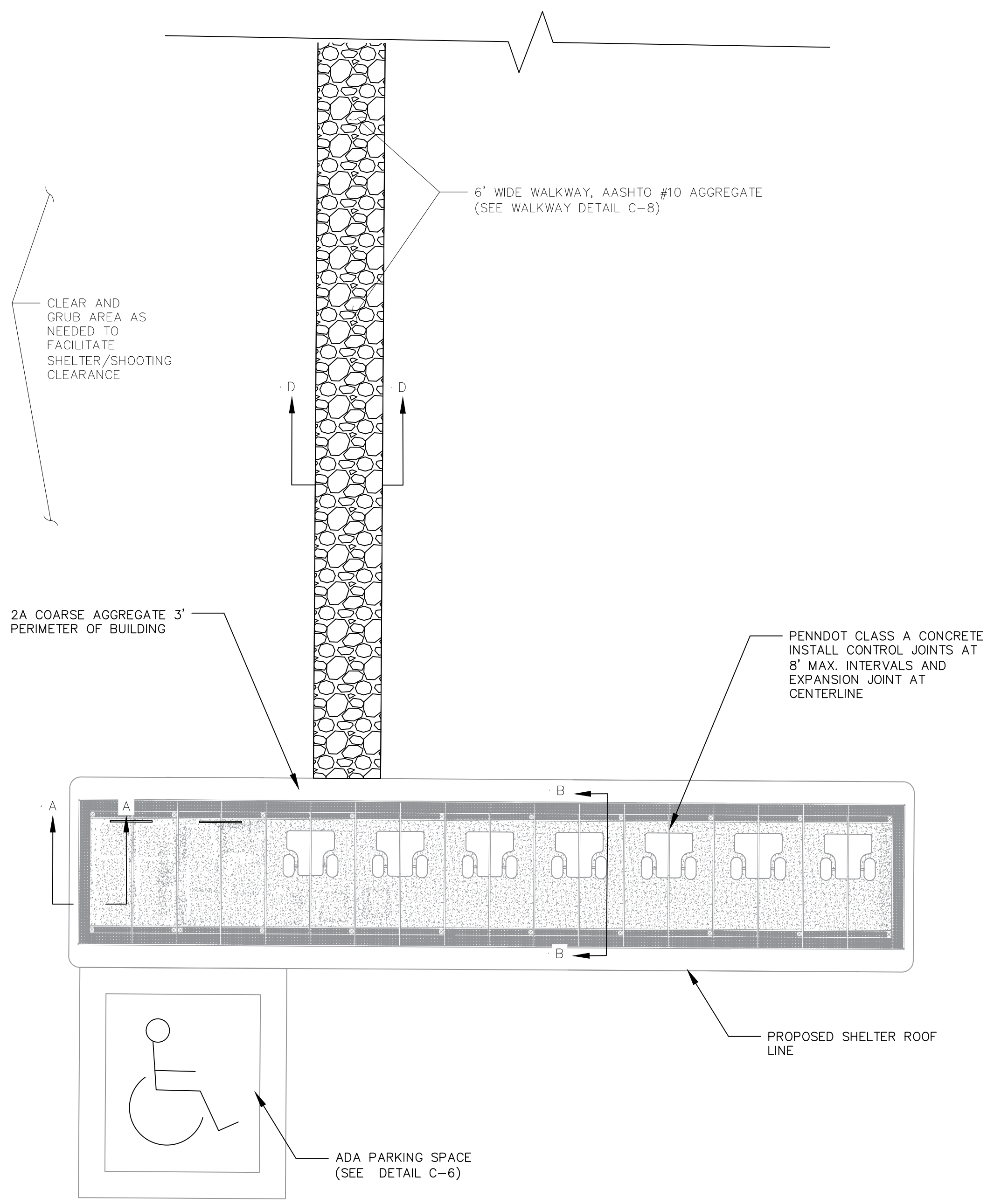


PENNSYLVANIA GAME COMMISSION		
STATE GAME LANDS #179	JACKSON TWP	GREENE CO.
SHOOTING RANGE IMPROVEMENTS		
EXISTING CONDITIONS		
REVISIONS	PROJECT NO.	PGC-179-22-1
▲	DRAWN BY:	AGL
▲	DATE:	4/03/2025
▲	SHEET NO.	2 OF 5

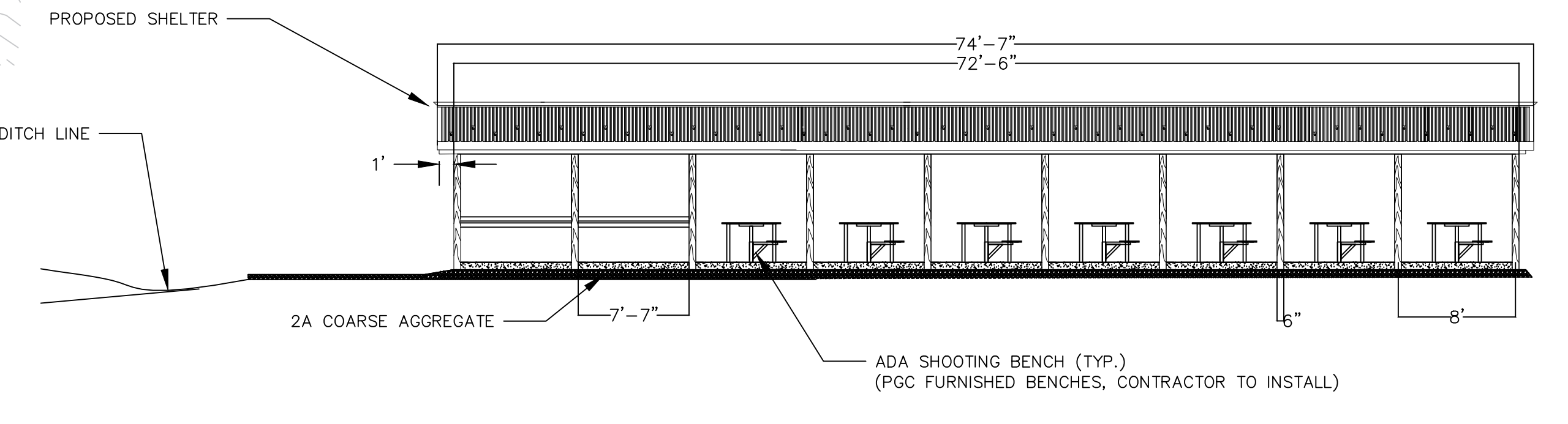


PLAN - PROPOSED RANGE
1/32 IN = 1 FT

- SHOOTING RANGE IMPROVEMENT CONSTRUCTION TASKS (CONTINUED):**
- RIFLE RANGE:**
- (1) DESIGNATED HANDICAPPED PARKING SPACE. (SEE DETAIL)
 - PROVIDE (1) BACKSTOP FOR 10, 25, AND 50 YARD RANGES. (SEE DETAIL)
 - PROVIDE DITCH LINE ENTIRE LENGTH OF RANGE ON EAST SIDE. (SEE DETAIL)
 - WALKWAY ON RANGE FLOOR NOT TO EXCEED 1:20 SLOPE.
 - REMOVE SOD AND PLACE 6" WIDE X 8" DEEP 2A COURSE AGGREGATE TOPPED WITH 2" AASHTO #10.

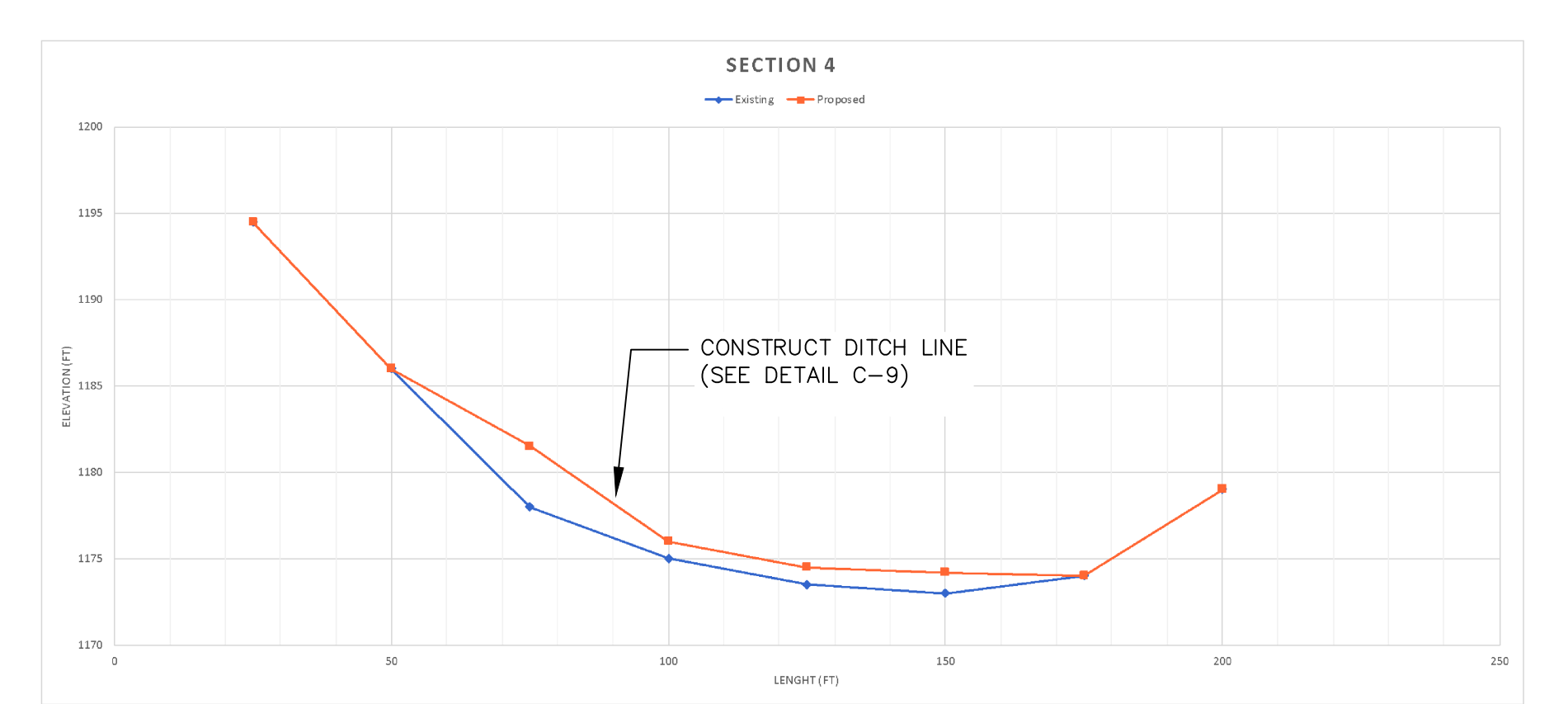
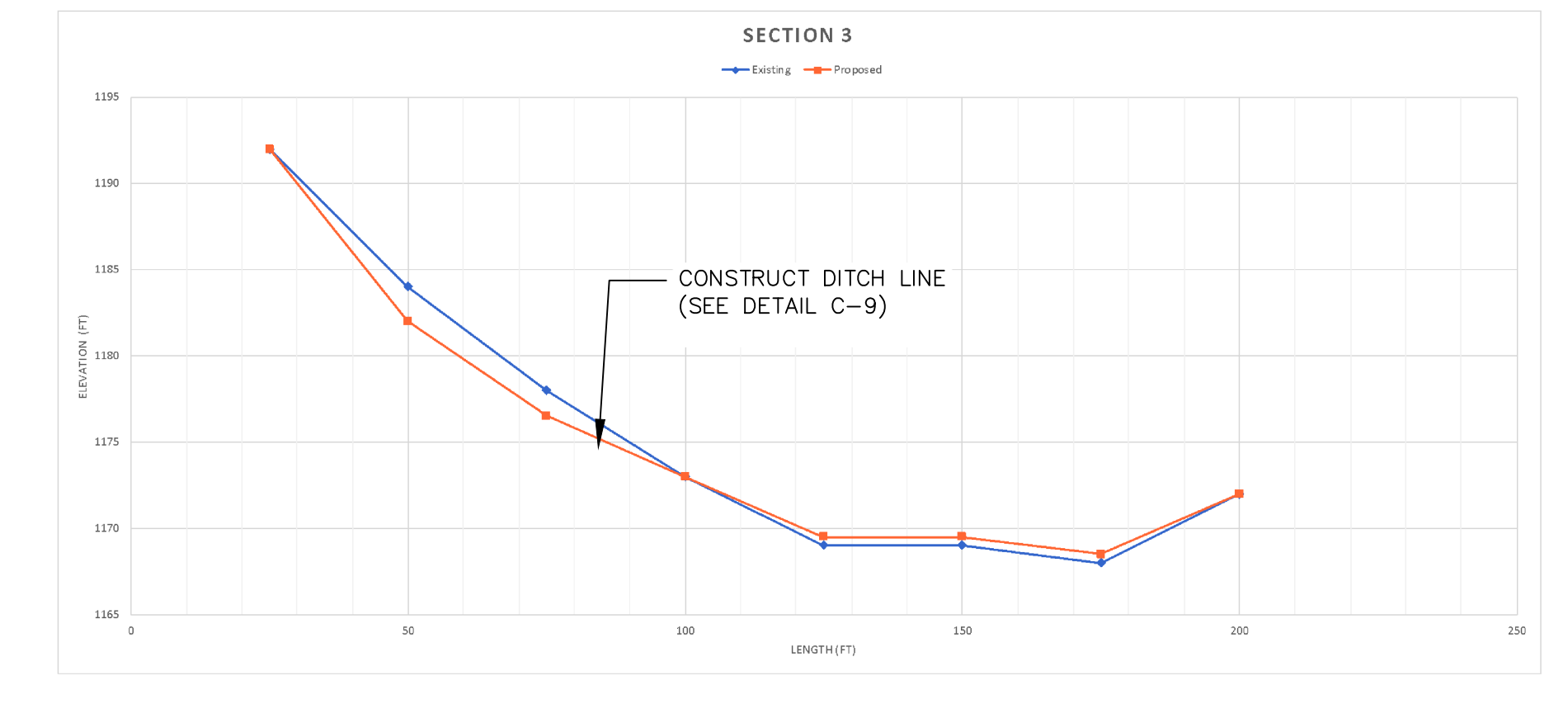
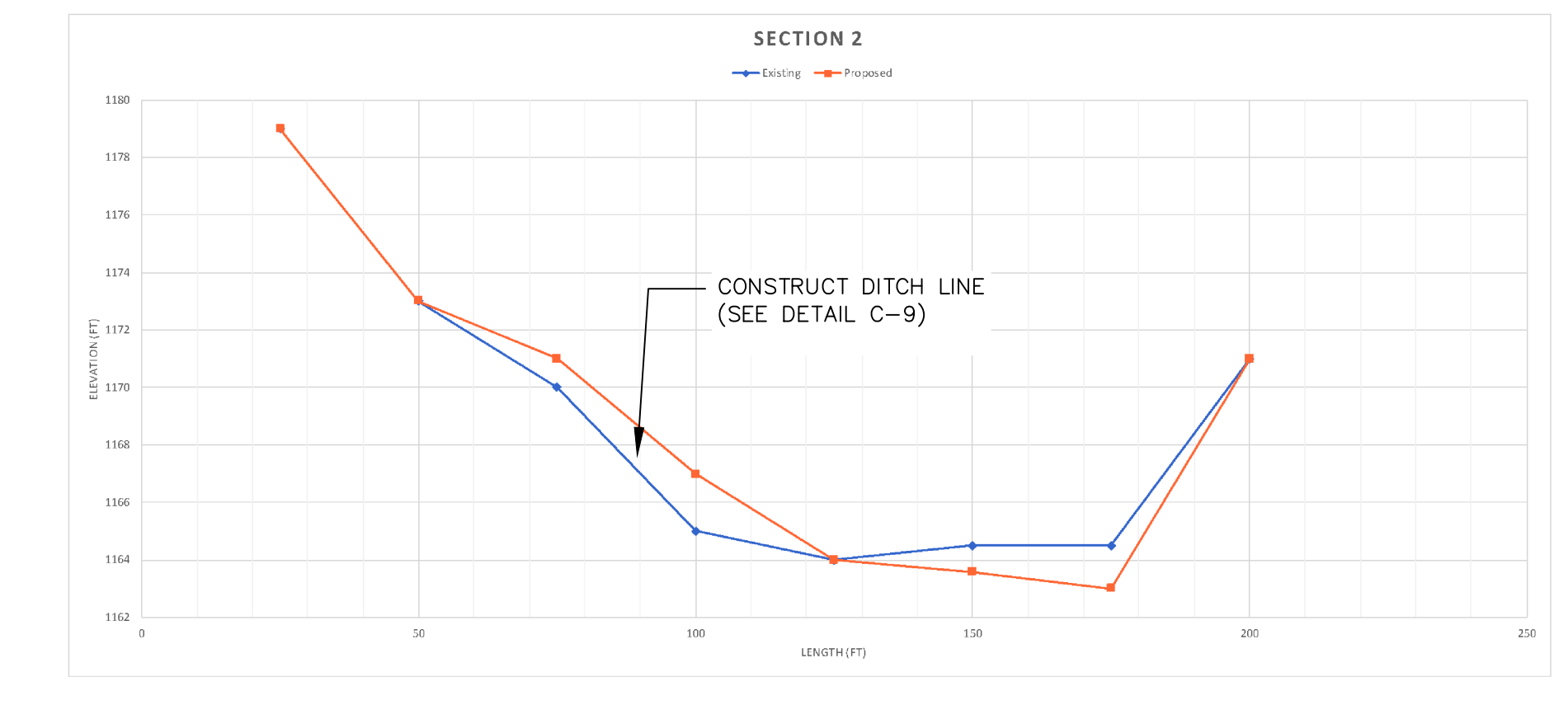
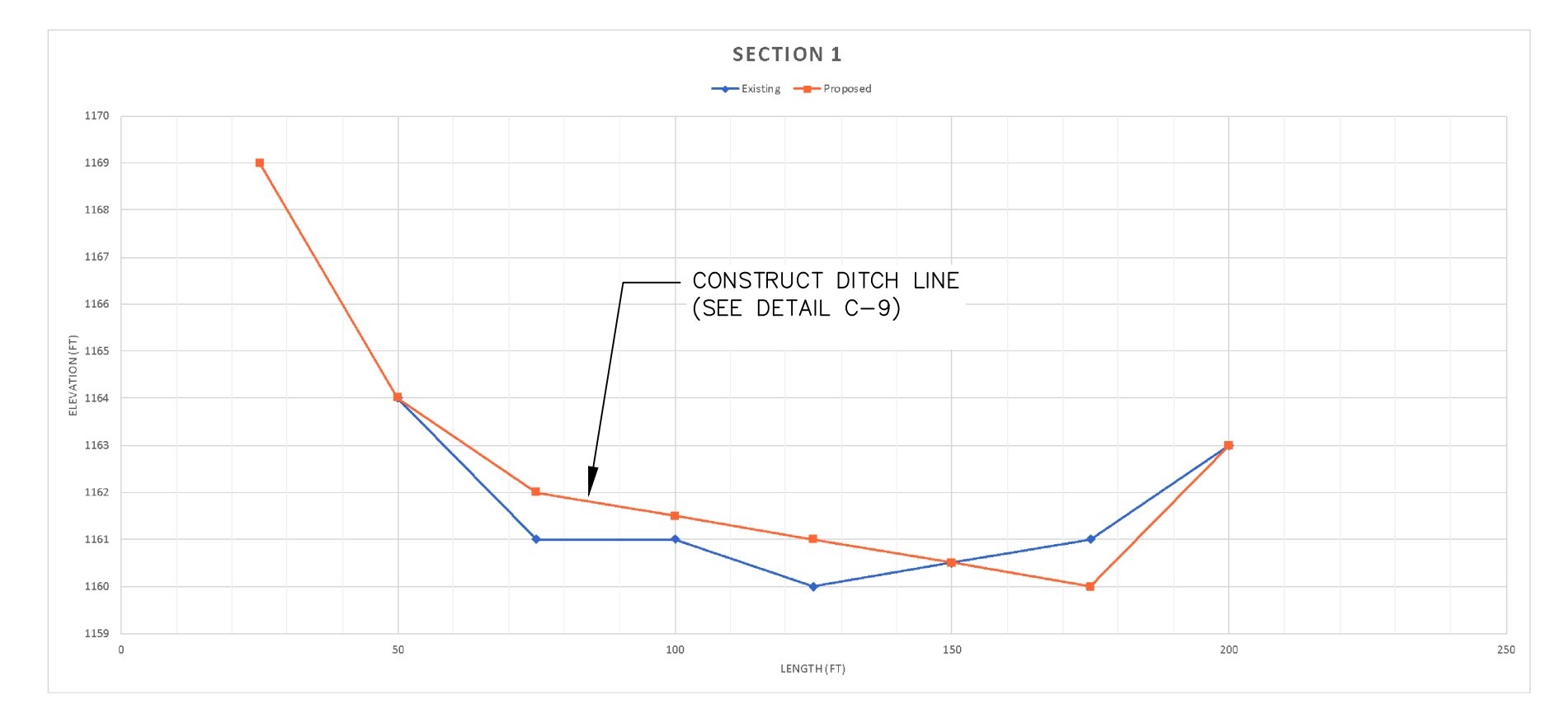


PLAN - PROPOSED RANGE
1/8 IN = 1 FT

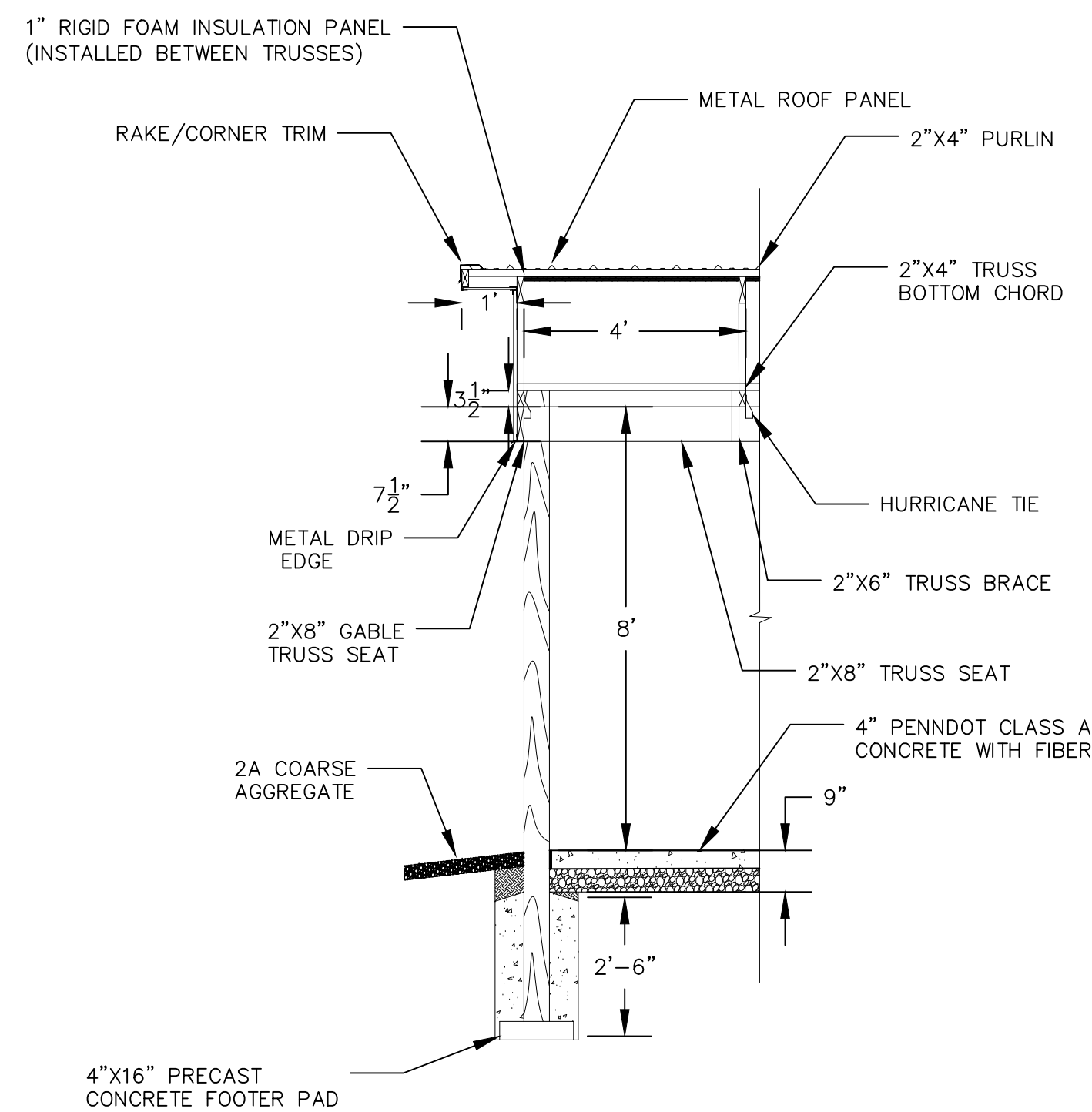


ELEVATION - PROPOSED RIFLE/PISTOL RANGE (FACING DOWNRANGE)
1/8 IN = 1 FT

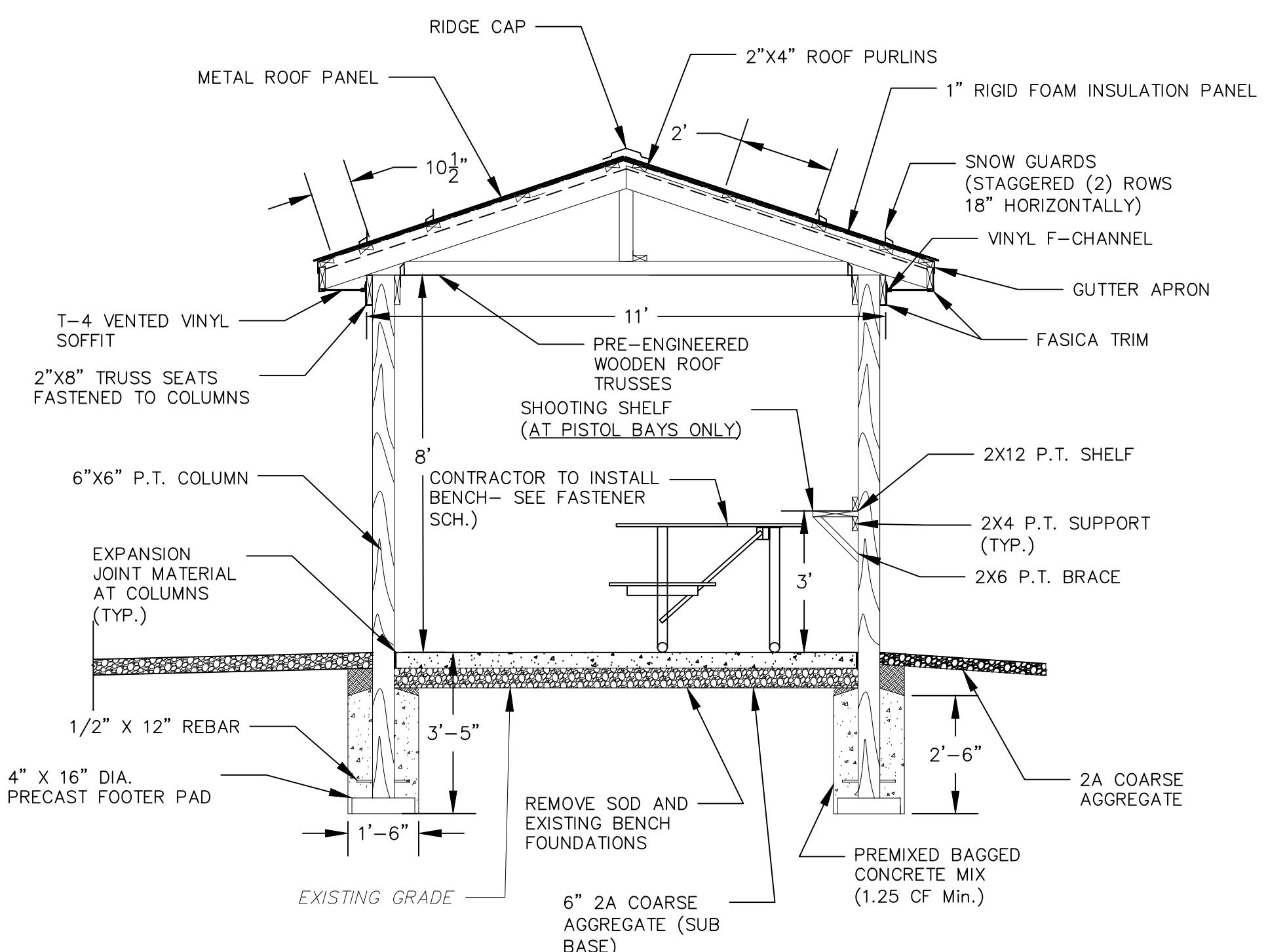
APPROXIMATE CUT AND FILL CALCULATIONS



PENNSYLVANIA GAME COMMISSION		
STATE GAME LANDS #179	JACKSON TWP	GREENE CO.
SHOOTING RANGE IMPROVEMENTS		
SITE AND GRADING PLAN		
REVISIONS		
PROJECT NO.	PGC-179-22-1	
DRAWN BY:	AG	
DATE:	4/03/2023	
SHEET NO.	3 OF 5	



C-1 SECTION A-A TYPICAL SHELTER GABLE DETAIL
3/8 IN. = 1 FT.

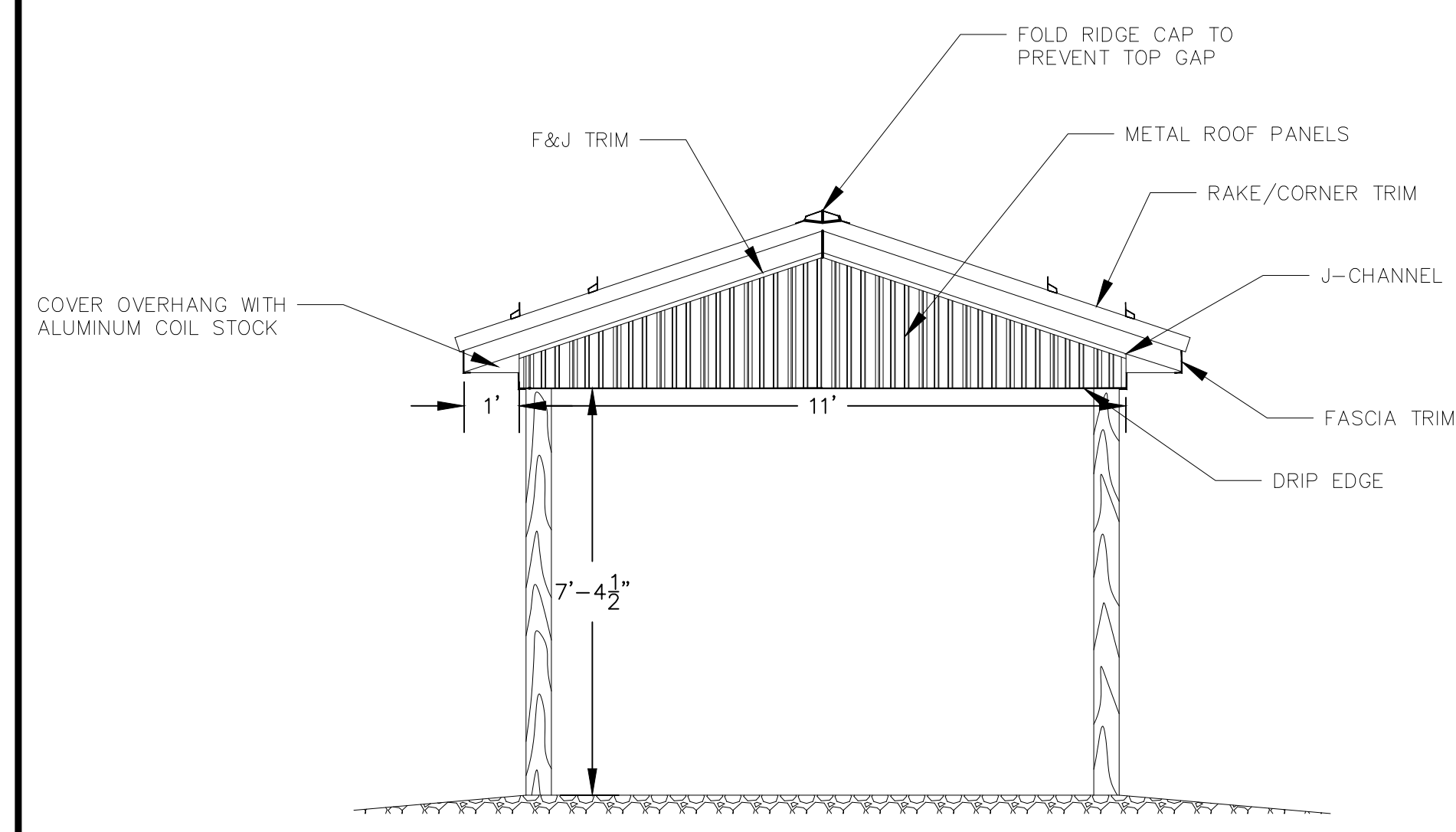


C-4 SECTION B-B TYPICAL SHELTER DETAIL
3/8 IN. = 1 FT.

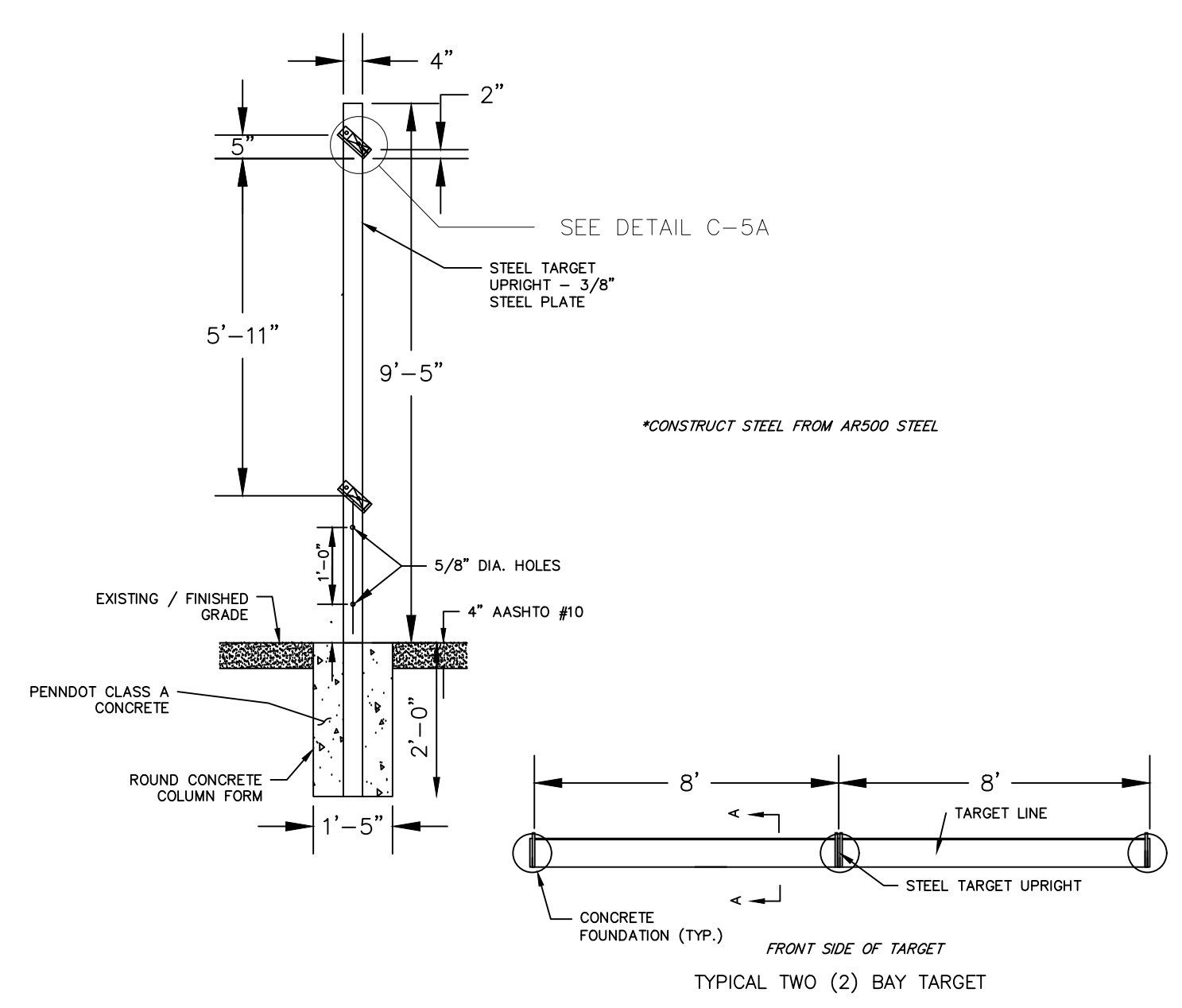
FASTENER SCHEDULE - SHOOTING STATION SHELTER

CONNECTION	PER CONNECTION
TRUSS SEATS TO POST	TWO 2" X 10" GALVANIZED CARRIAGE BOLTS w/ (4) GRK RUGGED STRUCTURAL SCREWS 2.100
TRUSSES TO TRUSS SEATS**	SIMPSON STRONG-TIE H12 HURRICANE TIE (2-MAX) w/ 8d GALVANIZED NAILS
PURLINS TO TRUSSES (TOP CHORD)	(3) 3" X .131 RING SHANK, HOT DIPPED GALVANIZED NAILS
FASCIA BOARD TO TRUSS ENDS	(3) 3" X .131 RING SHANK, HOT DIPPED GALVANIZED NAILS
2"x4" LONGITUDINAL BRACE TO TRUSS LOWER CHORD	(3) 3" X .131 RING SHANK, HOT DIPPED GALVANIZED NAILS
2"x4" DIAGONAL PORTAL BRACE TO TRUSS UPPER CHORDS	(3) 3" X .131 RING SHANK, HOT DIPPED GALVANIZED NAILS
2"x4" LONGITUDINAL TOP AND BOTTOM SHELF SUPPORTS TO POST OF HANGGUN RANGE	(3) #10 - 3" SCREWS
2"x4" BRACE FROM SHELF TO POST	(3) #10 - 3" SCREWS
2"x12" SHELF TO 2"x4" SUPPORT	(8) #10 - 3" SCREWS
SHOOTING BENCH LEGS ATTACHMENT TO CONCRETE SLAB	(4) 3/8" X 3" GALVANIZED LDT TAPOON (PER BENCH)

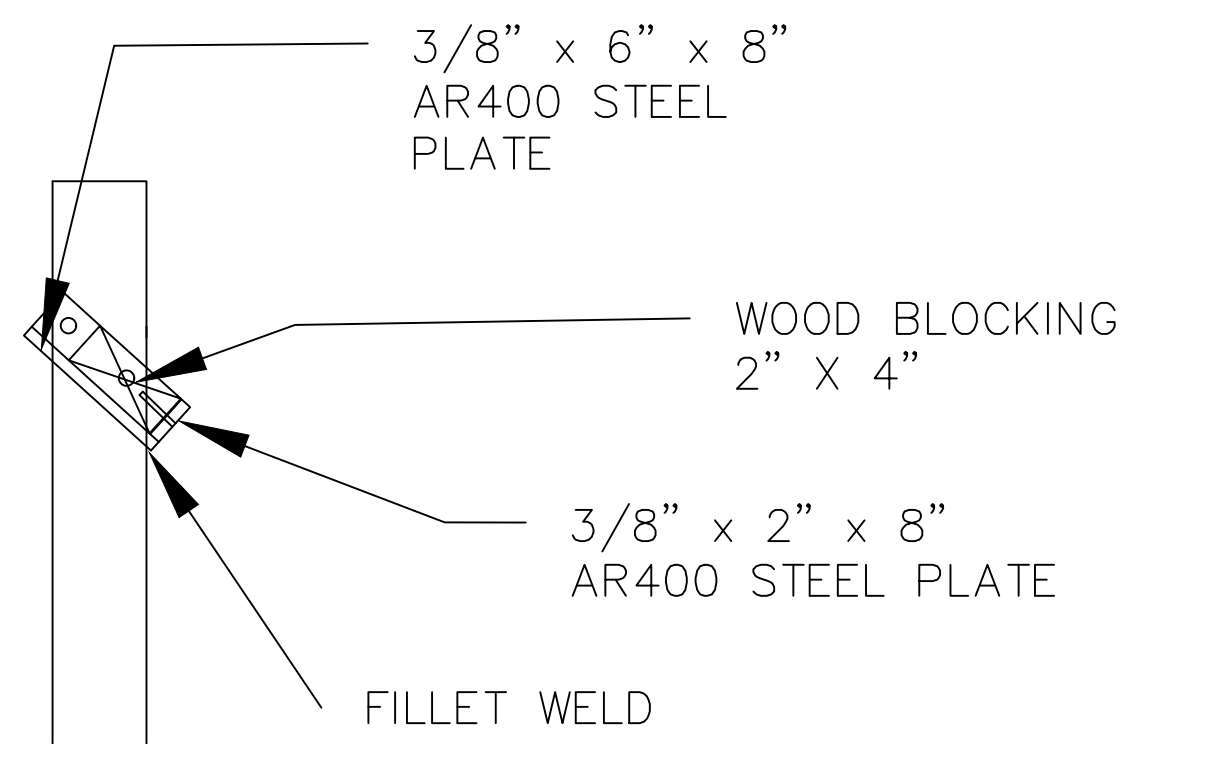
** TRUSSES MAY ALSO BE CONNECTED TO THE TRUSS SEATS WITH 2"x4" SCRAPS ON (1) SIDE OF TRUSSES WHEN NOT POSITIONED ASIDE OF A COLUMN POST. PROVIDE (3) - 3" X .131 RING SHANK, HOT DIPPED GALVANIZED NAILS PER SIDE PER CONNECTION.



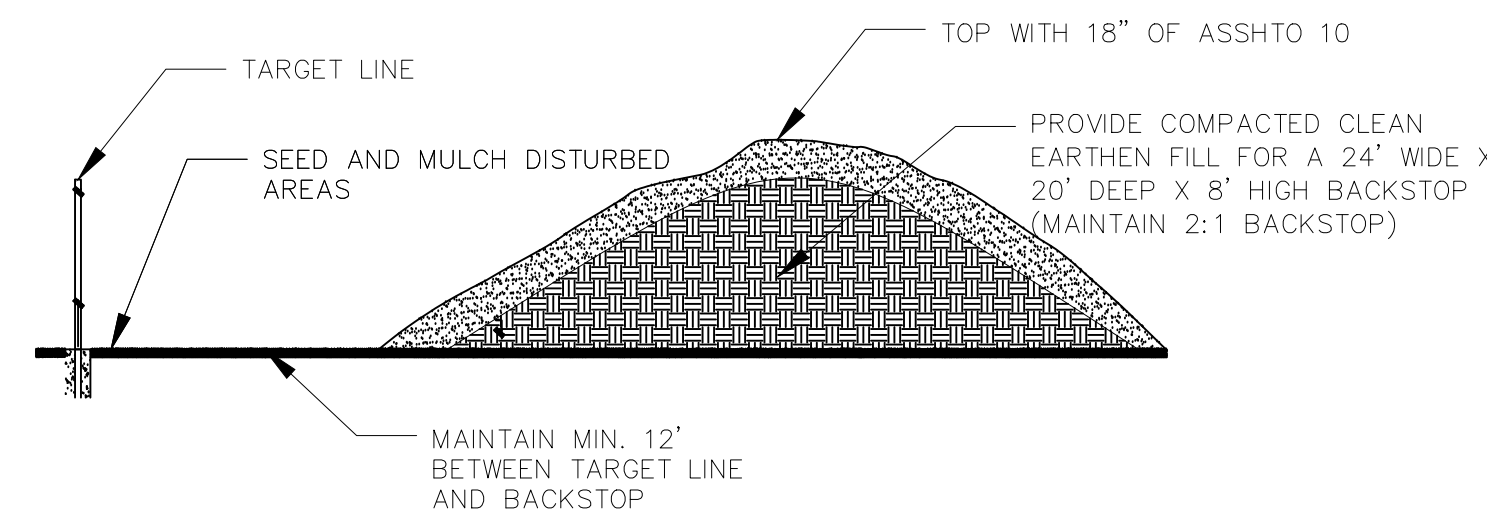
C-2 TYPICAL SHELTER END GABLE ELEVATION
3/8 IN. = 1 FT.



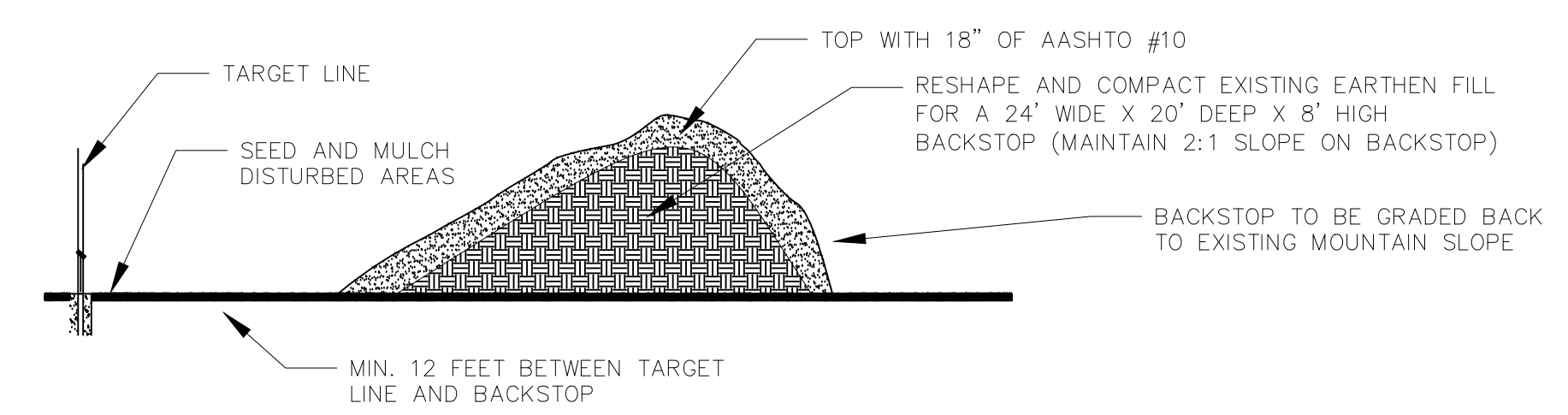
C-5 TARGET HOLDER TYPICAL DETAILS
1/2 IN. = 1 FT.



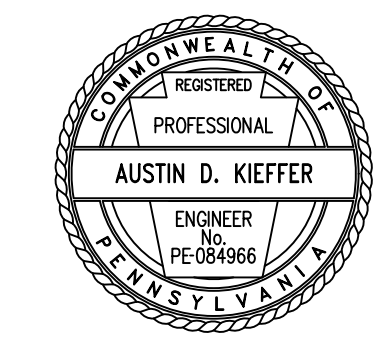
C-5A TARGET HOLDER TYPICAL DETAILS
NTS



C-3 SHOOTING RANGE 50 & 100 YD BACKSTOP DETAIL
1/8 IN. = 1 FT.

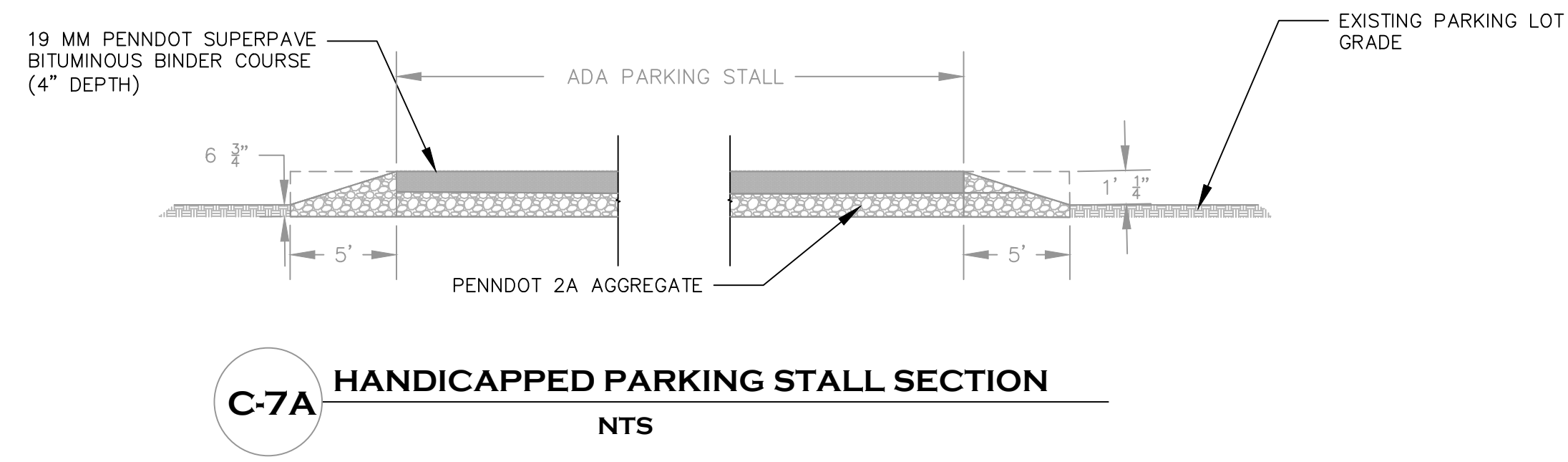
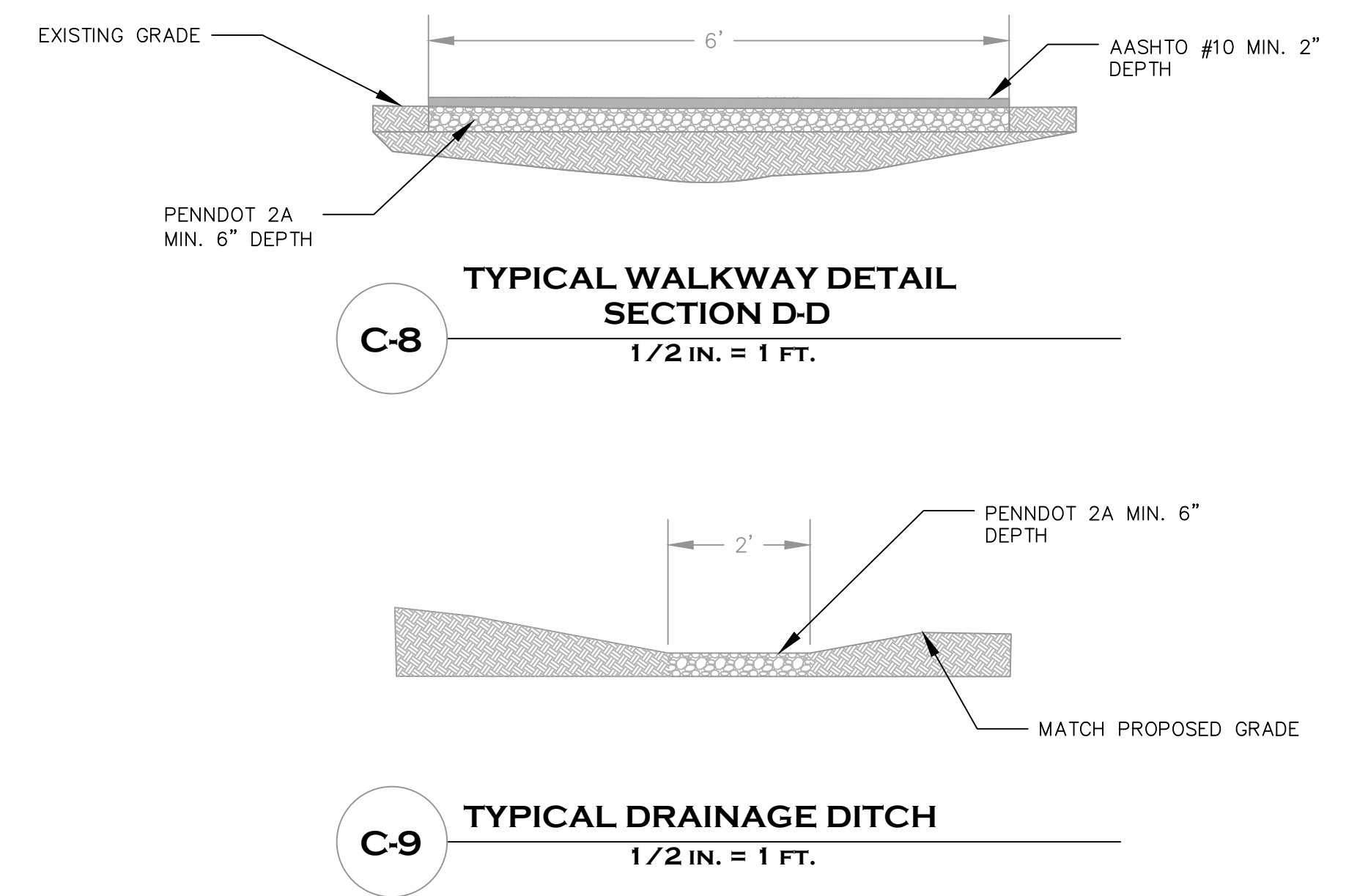
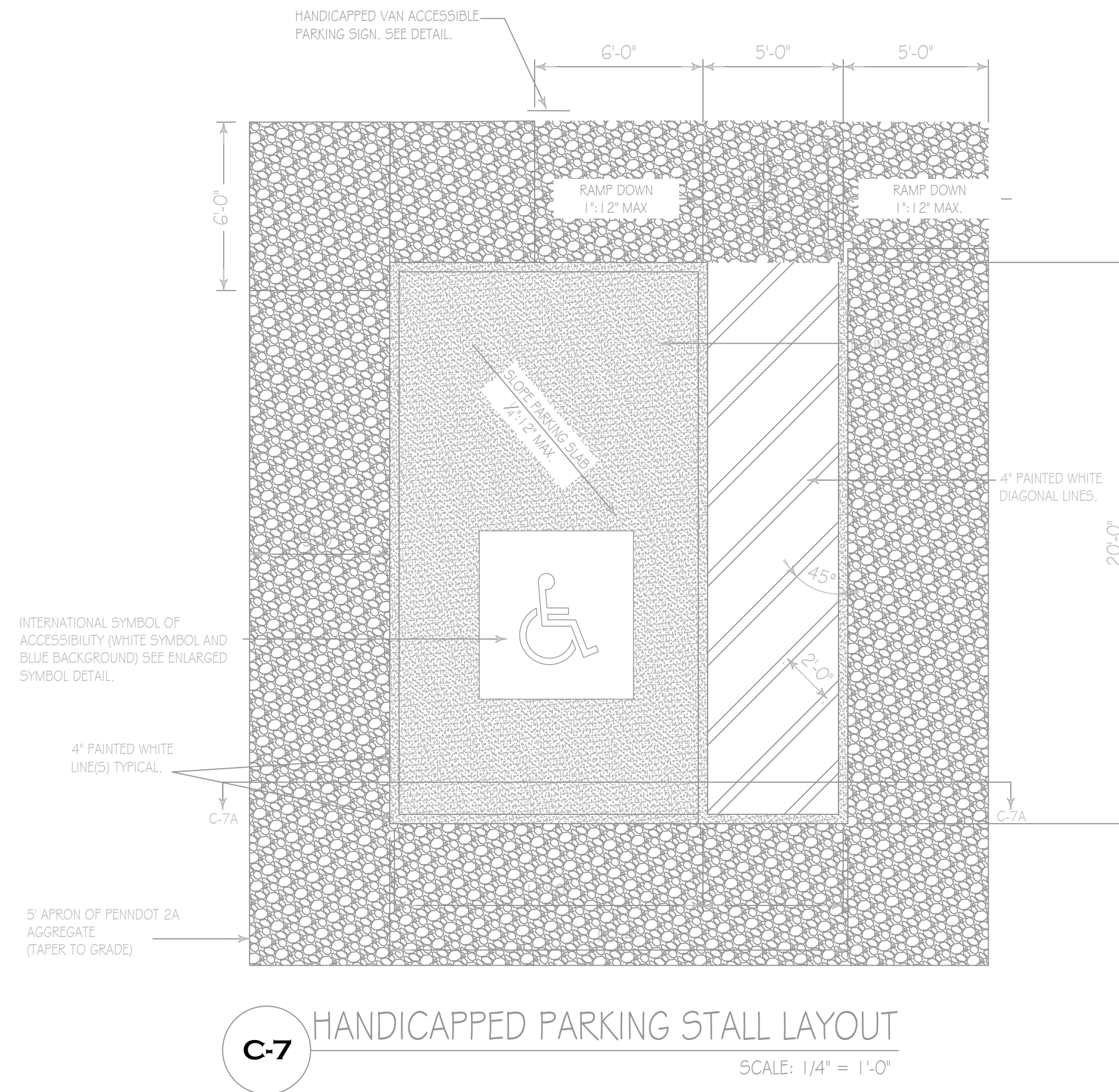
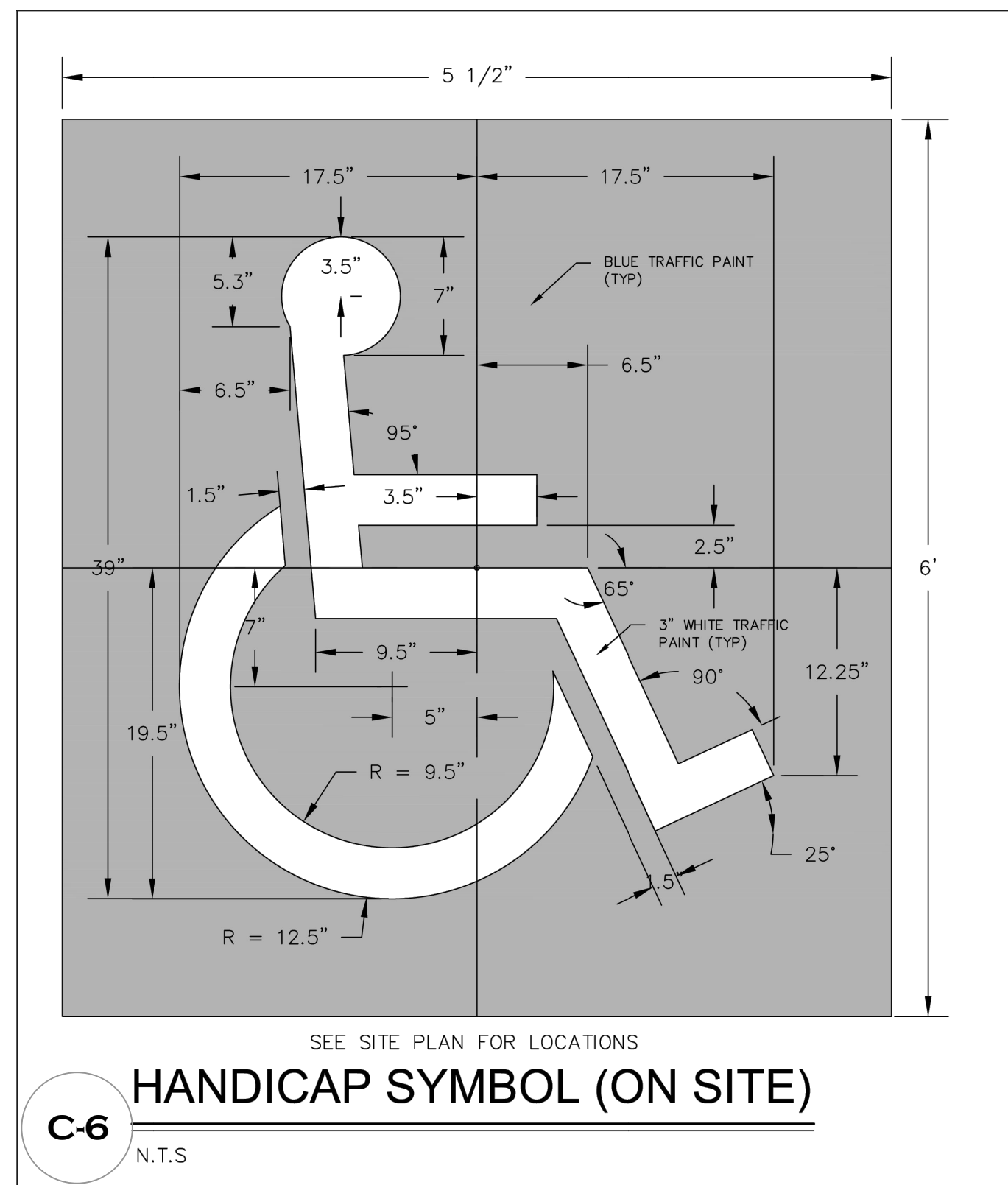


C-6 SHOOTING RANGE 300 YD BACKSTOP DETAIL
1/8 IN. = 1 FT.

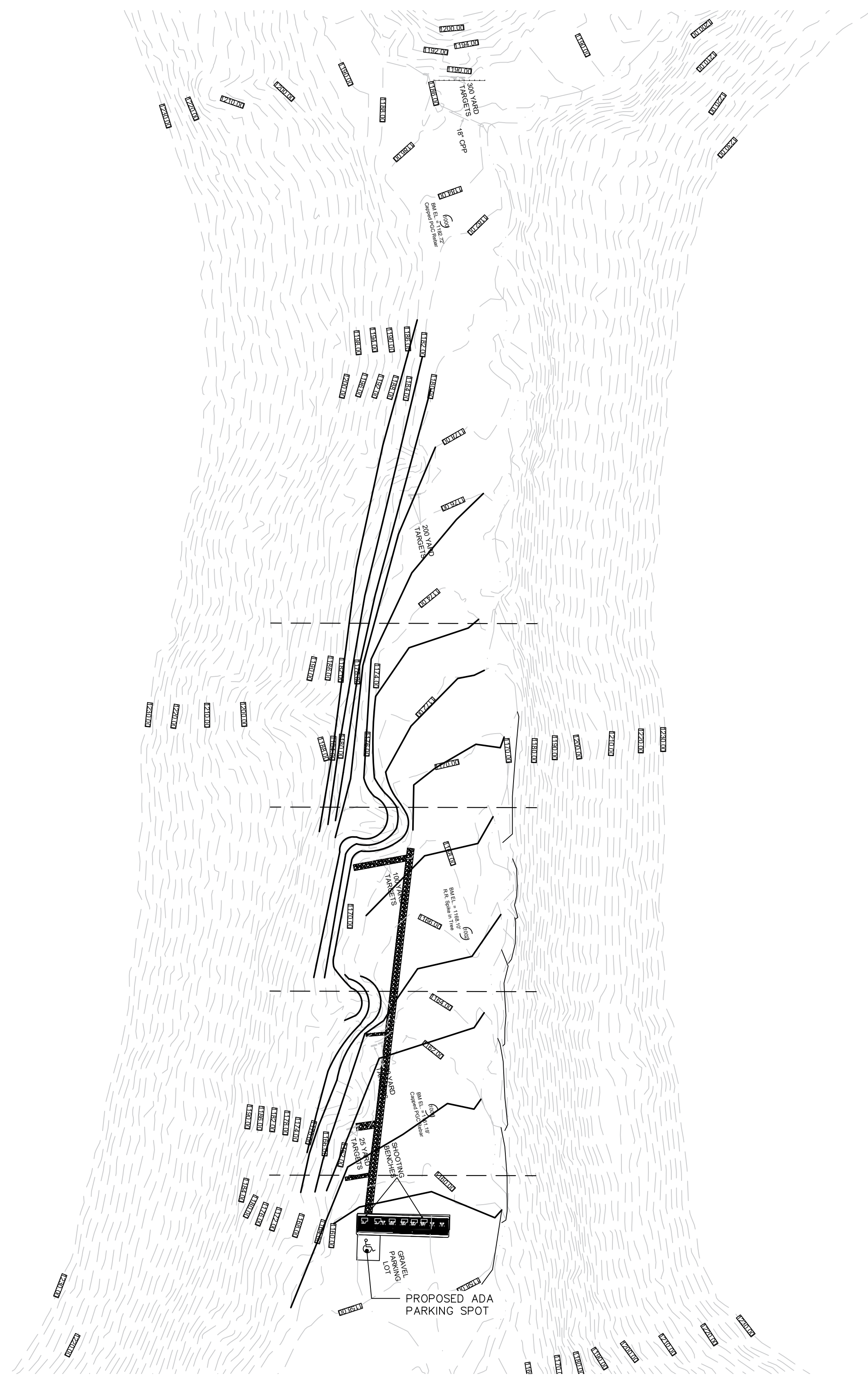


PENNSYLVANIA GAME COMMISSION

STATE GAME LANDS #179	JACKSON TWP	GREENE CO.
SHOOTING RANGE IMPROVEMENTS		
DETAILS		
REVISIONS	PROJECT NO.	PGC-179-22-1
	DRAWN BY:	ACL
	DATE:	4/03/2025
	SHEET NO.	4 OF 5



PENNSYLVANIA GAME COMMISSION		
STATE GAME LANDS #179	JACKSON TWP	GREENE CO.
SHOOTING RANGE IMPROVEMENTS		
DETAILS CONT		
REVISIONS	PROJECT NO.	PGC-179-22-1
▲	DRAWN BY:	ACL
▲	DATE:	4/03/2025
▲	SHEET NO.	5 OF 5



PLAN - PROPOSED RANGE

1/32 IN = 1 FT

E&S NOTES:

ALL EXCESS FILL MATERIAL TO BE STORED AND/OR DISPOSED OF SHALL BE OUTSIDE OF THE 50' FLOODPLAIN, AT AN UPLAND LOCATION ON EXISTING ROADWAY.

CONTRACTOR WILL STABILIZE ALL DISTURBED AREAS IMMEDIATELY AFTER ALL EARTH DISTURBANCE ACTIVITIES CEASE. DURING NON-GERMINATION PERIODS, MULCH MUST BE APPLIED AT A RATE OF 1.2 LBS./SY.

IMMEDIATELY UPON DISCOVERING UNFORESEEN CIRCUMSTANCES POSING THE POTENTIAL TO ACCELERATE EROSION/SEDIMENTATION, THE PGC SHALL IMPLEMENT ADDITIONAL APPROPRIATE BMPS TO MITIGATE THE PROBLEM.

THE PGC SHALL NOTIFY DEP OF ANY REVISION TO THIS PLAN FOR REVIEW AND APPROVAL PRIOR TO INITIATING ANY CHANGES.

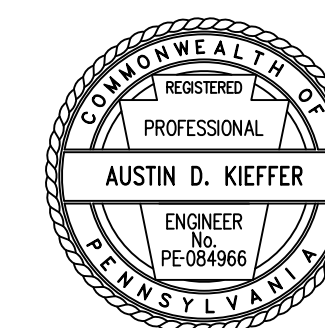
ALL CONSTRUCTION WASTE WILL BE REMOVED FROM THE SITE AND DISPOSED OF IN ACCORDANCE WITH ALL DEP SOLID WASTE MANAGEMENT REGULATIONS; 25 PA CODE 260.1 ET SEQ. 271.1 ET SEQ. NO WASTE SHALL BE BURIED, BURNED, OR DUMPED AT THE SITE.

ALL SEDIMENT COLLECTED FROM BMPS SHALL BE RESTORED TO UPLAND AREAS AND STABILIZED.

BMPS SHALL NOT BE REMOVED UNTIL 70% VEGETATIVE COVER IS ESTABLISHED ACROSS THE ENTIRE PROJECT AREA. EXPOSED ROAD SURFACE SHALL BE COVERED WITH A 4-INCH LAYER OF COMPACTED #2A COARSE AGGREGATE.

PERMANENT STABILIZATION IS DEFINED AS A MINIMUM UNIFORM 70% PERENNIAL COVER OR OTHER MEANS WITH A DENSITY CAPABLE OF RESISTING ACCELERATED EROSION AND SEDIMENTATION.

ALL BMPS SHALL REMAIN IN PLACE UNTIL THE SITE IS STABILIZED. MAINTENANCE OF BMPS INCLUDES WEEKLY INSPECTIONS AND AFTER EACH RAINFALL EVENT. IF A BMP FAILS TO PERFORM AS EXPECTED, REPLACEMENT MAY BE NECESSARY.



PENNSYLVANIA GAME COMMISSION		
STATE GAME LANDS #179	JACKSON TWP	GREENE CO.
SHOOTING RANGE IMPROVEMENTS		
SITE AND GRADING PLAN		
REVISIONS	PROJECT NO.	PGC-179-22-1
▲	DRAWN BY:	ACL
▲	DATE:	4/03/2023
▲	SHEET NO.	3 OF 5